

Front protection complete with fittings: Brackets, bolts and tool key



Type OFFROAD

<i>Airflow</i>	B14-2
<i>Smooth profile</i>	B14-2S
<i>Mounting kit</i>	80121

Light-Bar with mounting kit



<i>Airflow</i>	H14-3
<i>Smooth profile</i>	H14-3S

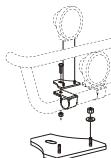
Lights and clamps are not included!

X-Light complete with fittings: Bolts, pre-wired and 4 spotlight clamps

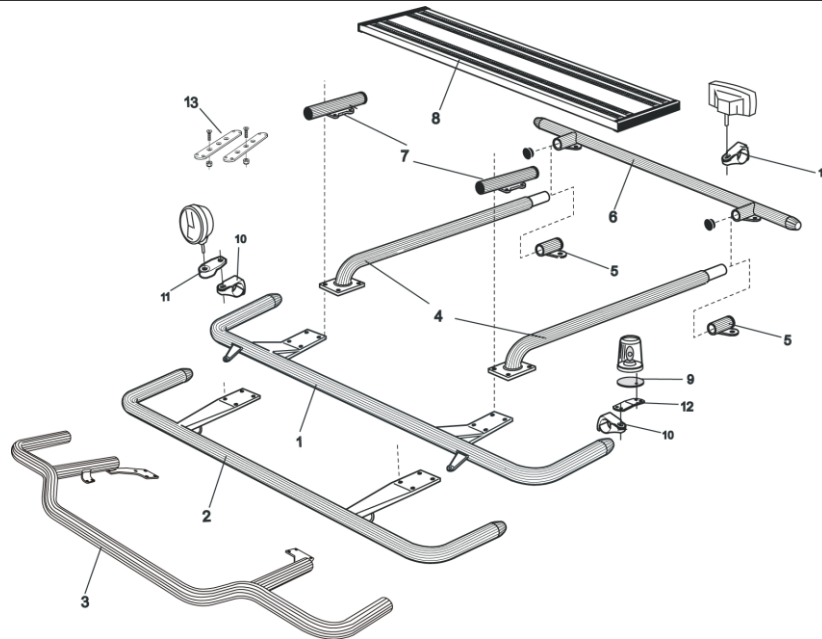


Lights not included!

<i>Airflow</i>	K14-4
----------------	-------



Mounting plate for Hella Luminator	15907
---	-------



Front Top-Bar, with mounting kit

1	for L1EH1 and L2H1	<i>Airflow</i>	G14-2
		<i>Smooth profile</i>	G11-2
2	for L2H2 Globetrotter	<i>Airflow</i>	G14-3
		<i>Smooth profile</i>	G11-3
3	for L2H2 Globetrotter low model	<i>Airflow</i>	G14-8
		<i>Smooth profile</i>	G14-8S
4	Spacing tube, with mounting kit		
	for L1EH1	<i>Airflow</i>	E14-1
		<i>Smooth profile</i>	E11-1
	for L2H1	<i>Airflow</i>	E14-2
		<i>Smooth profile</i>	E11-2
	for L2H2	<i>Airflow</i>	E14-3
		<i>Smooth profile</i>	E11-3
5	Rear fitting for spacing tube, with mounting kit		
	for L1EH1, L2H1 and L2H2	<i>Airflow</i>	15906
		<i>Smooth profile</i>	15960
6	Rear Top-Bar, with mounting kit		
	for L1Eh1, L2H1 and L2H2	<i>Airflow</i>	G14-1
		<i>Smooth profile</i>	G11-1
7	Spacing tube for cooler cab, with mounting kit		E14-4
			<i>Expired!</i>
8	Catwalk with fittings		15935
9	Mounting plate for beacon		
	Ø 150 mm		15915
	Ø 165 mm		15917
	Ø 240 mm		15916
10	Airflow clamp		15903
	Clamp		15902
11	Airflow extension		15923
	Extension		15912
12	Angled extension for beacon (8°)		15945
13	Universal fitting for roof signs / roof light bars		20409

AIRFLOW

These products are supplied in our AIRFLOW profile as standard.
The new generation aerodynamic accessories are designed for the highest performance.
On request, we can also supply the products in the traditional "smooth" profile.



FINISH

As standard the accessories are supplied **anodized** in silver color.
Products can also be supplied **sand blasted** for your own lacquering, no additional charge,
or **powder coated** in black or white color or **lacquered** in your own personal color, ask us for a quote.

Brackets comes standard powder coated black, but is possible to get painted in the same color as the front protection

Note! Catwalks come anodized only.

FURTHER INFORMATION about our accessories for mounting of, for example, lights can be found in our folder
"Accessories"

