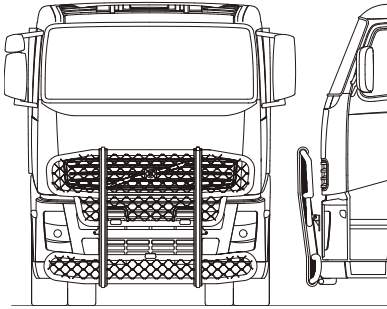
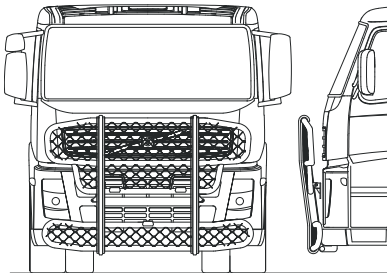


Front protection complete with fittings: Brackets, bolts and tool key



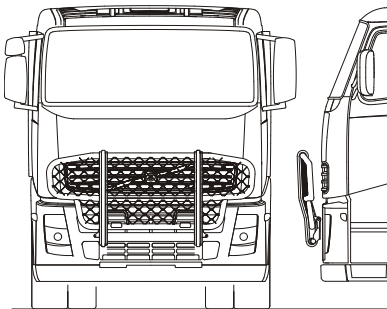
Type HIGHWAY for FH

<i>Airflow</i>	A14-2	43 500,-
<i>Smooth profile</i>	A14-2S	43 500,-
<i>Mounting kit</i>	80159	



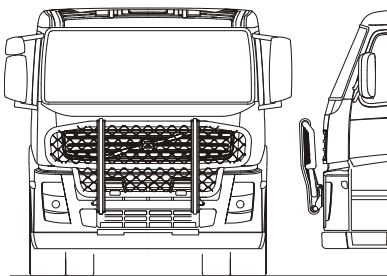
Type HIGHWAY for FM

<i>Airflow</i>	A14-2	43 500,-
<i>Smooth profile</i>	A14-2S	43 500,-
<i>Mounting kit</i>	80159	



Type OFFROAD for FH

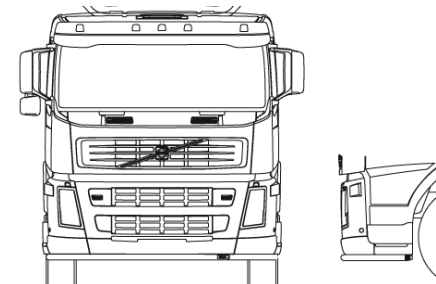
<i>Airflow</i>	B14-2	35 000,-
<i>Smooth profile</i>	B14-2S	35 000,-
<i>Mounting kit</i>	80117	



Type OFFROAD for FM

<i>Airflow</i>	B14-2	35 000,-
<i>Smooth profile</i>	B14-2S	35 000,-
<i>Mounting kit</i>	80117	

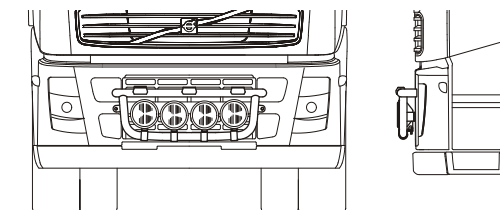
U-Bar with mounting kit (*not for trucks with Highway mounted*)



for FH and FM

<i>Airflow</i>	L14-2	5 600,-
<i>Smooth profile</i>	L14-2S	5 600,-

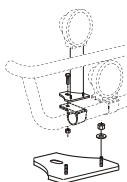
X-Light complete with fittings: Bolts, pre- wired and 4 spotlight clamps



Lights not included!

For **FH** and **FM**

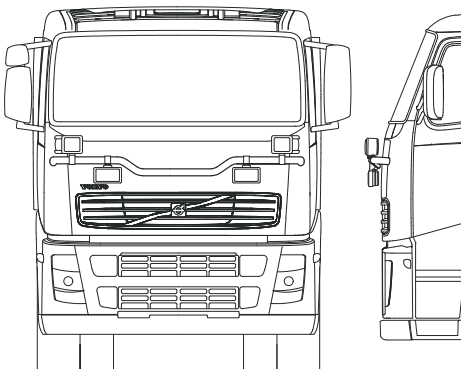
<i>Airflow</i>	K14-2	9 500,-
<i>Smooth profile</i>	K14-2S	9 500,-



Mounting plate for Hella luminator

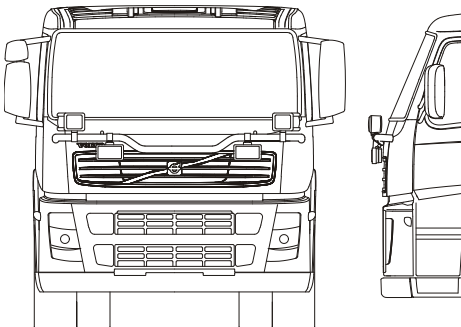
15907	210,-
-------	--------------

Light-Bar with mounting kit



FH

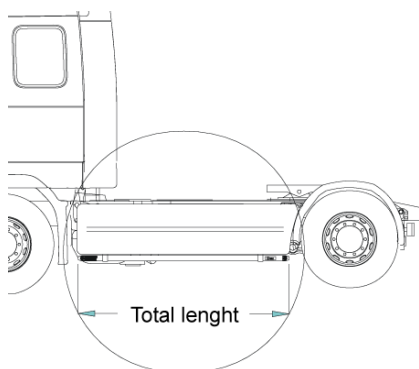
<i>Airflow</i>	H14-2	6 000,-
<i>Smooth profile</i>	H14-2S	6 000,-



FM

<i>Airflow</i>	H14-3	6 400,-
<i>Smooth profile</i>	H14-3S	6 400,-

Sideline

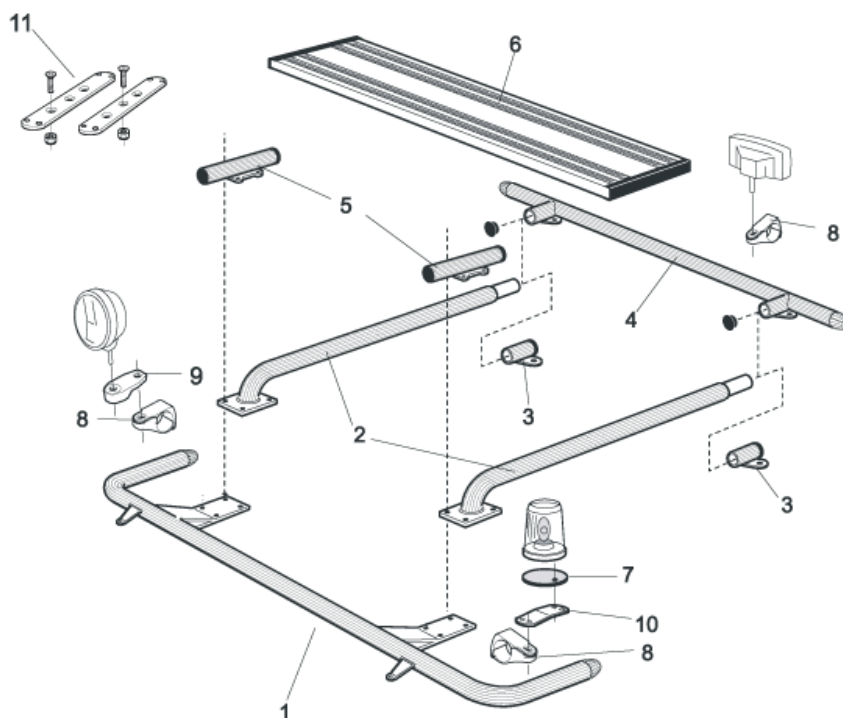


Total length / side 0 – 2500 mm

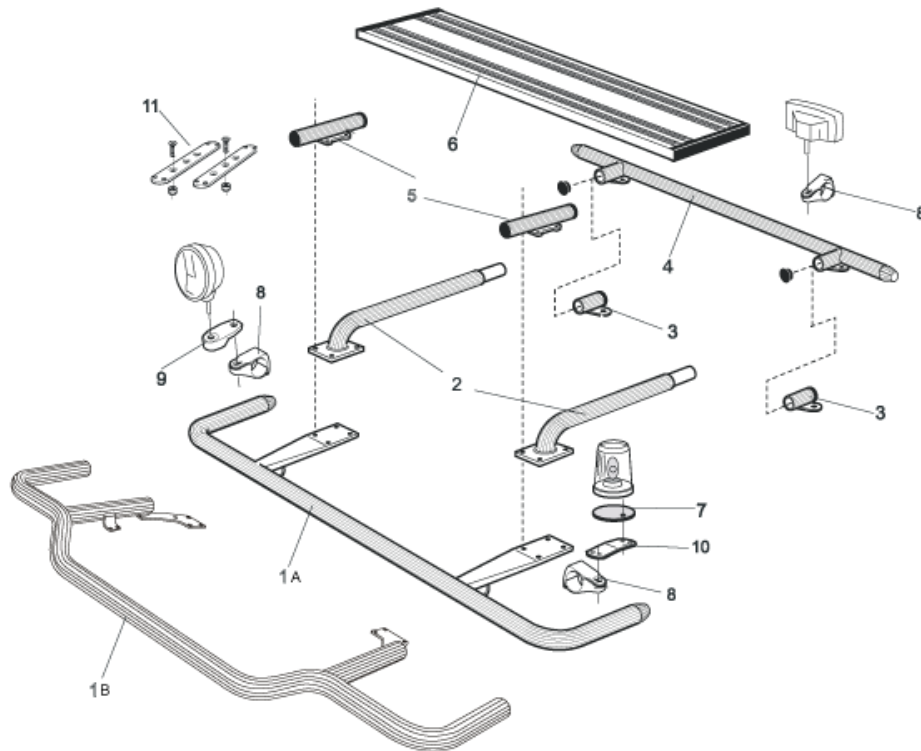
<i>Airflow</i>	S-1A	4 000,-
<i>Smooth profile</i>	S-1S	4 000,-

Total length / side 2501 – 5000 mm

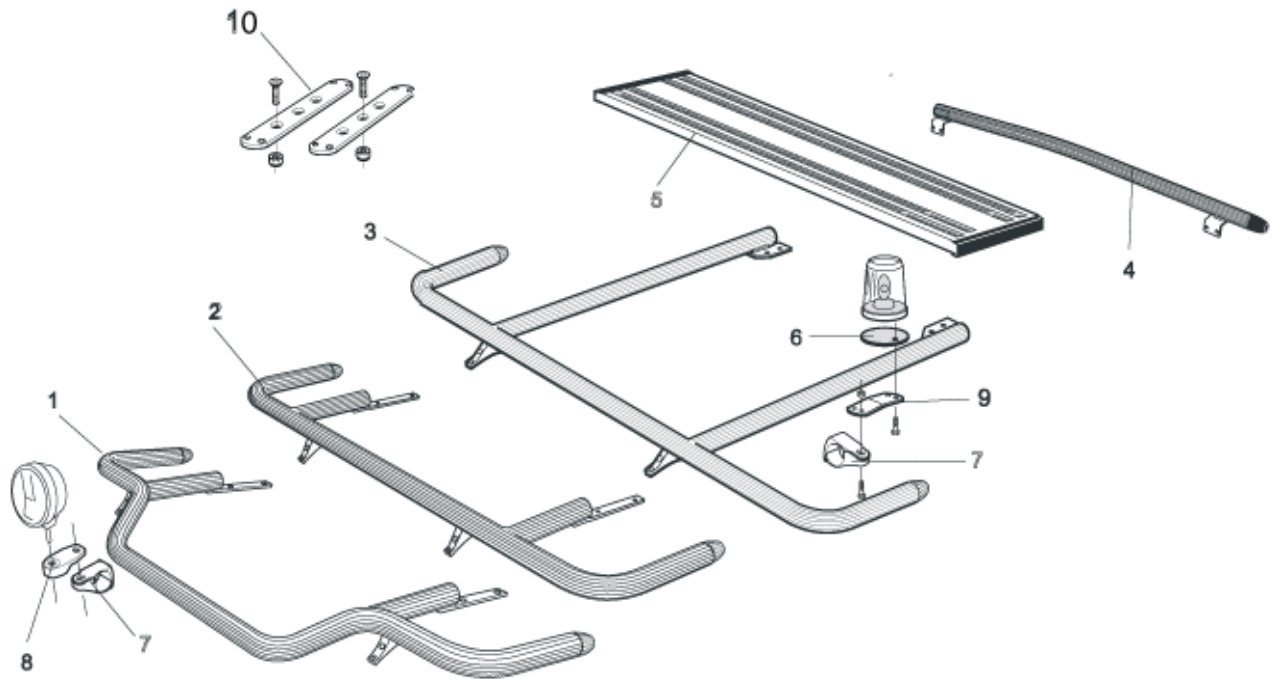
<i>Airflow</i>	S-2A	4 800,-
<i>Smooth profile</i>	S-2S	4 800,-



1 Front Top-Bar for L1EH1 and L2H1	<i>Airflow</i>	G14-2	6 100,-
	<i>Smooth profile</i>	G14-2S	6 100,-
2 Spacing tube, with mounting kit for L1EH1	<i>Airflow</i>	E14-1	3 600,-
	<i>Smooth profile</i>	E11-1	3 600,-
	<i>Airflow</i>	E14-2	3 800,-
	<i>Smooth profile</i>	E11-2	3 800,-
3 Rear fitting for spacing tube, with mounting kit for L1EH1, L2H1	<i>Airflow</i>	15906	1 500,-
	<i>Smooth profile</i>	15960	1 500,-
4 Rear Top-Bar, with mounting kit for L1EH1, L2H1 and L2H2	<i>Airflow</i>	G14-1	5 100,-
	<i>Smooth profile</i>	G11-1	5 100,-
5 Spacing tube for cooling cab, with mounting kit		E14-4	Expired!
6 Catwalk, with fittings		15935	3 300,-
7 Mounting plate for beacon	Ø 150 mm	15915	240,-
	Ø 165mm	15917	250,-
	Ø 240 mm	15916	280,-
8 Airflow clamp		15903	350,-
	Clamp	15902	290,-
9 Airflow extension		15923	120,-
	Extension	15912	120,-
10 Angled extension for beacon (8°)		15945	140,-
11 Universal fitting for roof signs / roof light bars		20409	530,-



1	Front Top-Bar , with mounting kit for L2H2			
A	Straight model	<i>Airflow</i>	G14-3	6 100,-
		<i>Smooth profile</i>	G11-3	6 100,-
B	Low model	<i>Airflow</i>	G14-8	7 200,-
		<i>Smooth profile</i>	G14-8S	7 200,-
2	Spacing tube , with mounting kit for L2H2	<i>Airflow</i>	E14-3	3 600,-
		<i>Smooth profile</i>	E11-3	3 600,-
3	Rear fitting for spacing tube , with mounting kit	<i>Airflow</i>	15906	1 500,-
		<i>Smooth profile</i>	15960	1 500,-
4	Rear Top-Bar , with mounting kit for L1EH1, L2H1 and L2H2	<i>Airflow</i>	G14-1	5 100,-
		<i>Smooth profile</i>	G11-1	5 100,-
5	Spacing tube for cooling cab , with mounting kit		E14-4	Expired!
6	Catwalk , with fittings		15935	3 300,-
7	Mounting plate for beacon	Ø 150 mm	15915	240,-
		Ø 165mm	15917	250,-
		Ø 240 mm	15916	280,-
8	Airflow clamp		15903	350,-
	Clamp		15902	290,-
9	Airflow extension		15923	120,-
	Extension		15912	120,-
10	Angled extension for beacon (8°)		15945	140,-
11	Universal fitting for roof signs / roof light bars		20409	530,-



Front Top-Bar, with mounting kit for L2H3

1 Low model

Airflow G14-7 **7 200,-**

Smooth profile G14-7S **7 200,-**

2 Straight model for large roof spoiler

Airflow G14-5 **6 400,-**

Smooth profile G14-5S **6 400,-**

3 Straight model

Airflow G14-4 **6 400,-**

Smooth profile G11-4 **6 400,-**

4 Rear Top-Bar, with mounting kit for L2H3

Airflow G14-6 **5 100,-**

Smooth profile G14-6S **5 100,-**

5 Catwalk, with fittings

15935 **3 300,-**

6 Mounting plate for beacon

Ø 150 mm

15915 **240,-**

Ø 165mm

15917 **250,-**

Ø 240 mm

15916 **280,-**

7 Airflow clamp

15903 **350,-**

Clamp

15902 **290,-**

8 Airflow extension

15923 **120,-**

Extension

15912 **120,-**

9 Angled extension for beacon (8°)

15945 **140,-**

10 Universal fitting for roof signs / roof light bars

20409 **530,-**

AIRFLOW

These products are supplied in our AIRFLOW profile as standard.
The new generation aerodynamic accessories are designed for the highest performance.
On request, we can also supply the products in the traditional "smooth" profile.



FINISH

As standard the accessories are supplied **anodized** in silver color.
Products can also be supplied **sand blasted** for your own lacquering, no additional charge,
or **powder coated** in black or white color or **lacquered** in your own personal color, ask us for a quote.

Brackets comes standard powder coated black, but is possible to get painted in the same color as the front protection

Note! Catwalks come anodized only.

PRICES: All prices are in **SEK** and are subject to VAT and ex works Färila (Sweden)

We reserve the rights to technical or price changes without prior notice

FURTHER INFORMATION about our accessories for mounting of, for example, lights can be found in our folder

"Accessories"