

Front protection complete with fittings: Brackets, bolts and tool key



Type HIGHWAY

<i>Airflow</i>	A16-3	43 500,-
<i>Smooth profile</i>	A16-3S	43 500,-
<i>Mounting kit</i>	80162	



Type OFFROAD

<i>Airflow</i>	B16-3	36 900,-
<i>Smooth profile</i>	B16-3S	36 900,-
<i>Mounting kit</i>	80124	

Light-Bar with mounting kit



<i>Airflow</i>	H16-3	6 700,-
<i>Smooth profile</i>	H16-3S	6 700,-

Lights and clamps are not included!

X-Light complete with fittings: Bolts, pre- wired and 4 spotlight clamps



Lights not included!

(Not for trucks with adaptive cruise control and/or FLS)

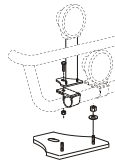
<i>Airflow</i>	K16-2	9 500,-
<i>Smooth profile</i>	K16-2S	9 500,-

X-Light high complete with fittings: Bolts, pre- wired and 4 spotlight clamps



Lights not included!

<i>Airflow</i>	K16-5	9 500,-
<i>Smooth profile</i>	K16-5S	9 500,-



Mounting plate for Hella luminator	15907	210,-
---	-------	--------------

X-Bar with mounting kit



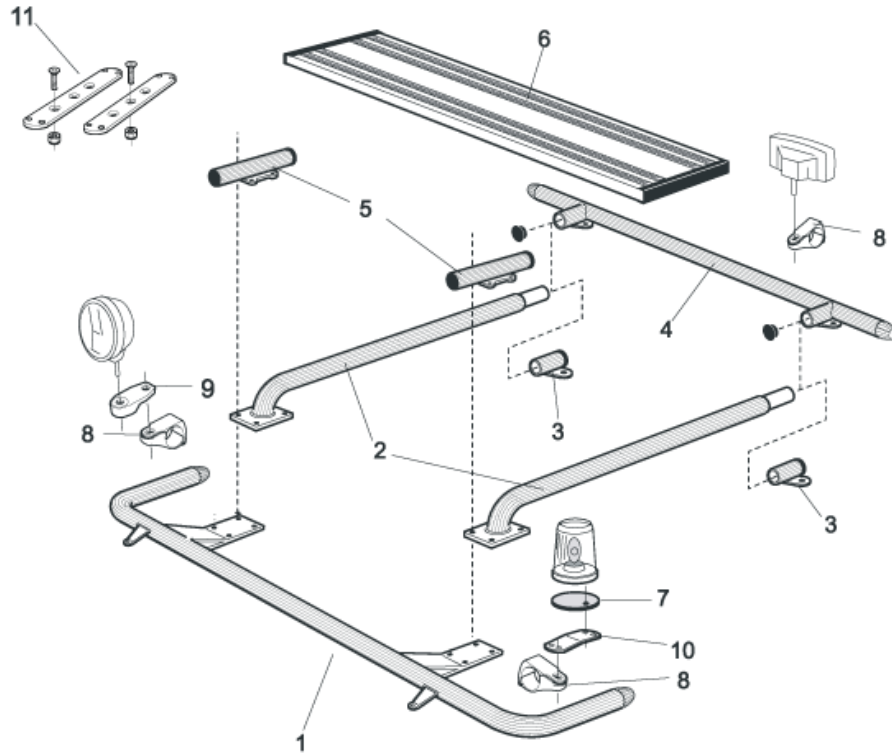
Lights and clamps are not included!

<i>Airflow</i>	H16-4	4 700,-
<i>Smooth profile</i>	H16-4S	4 700,-

U-Bar with mounting kit

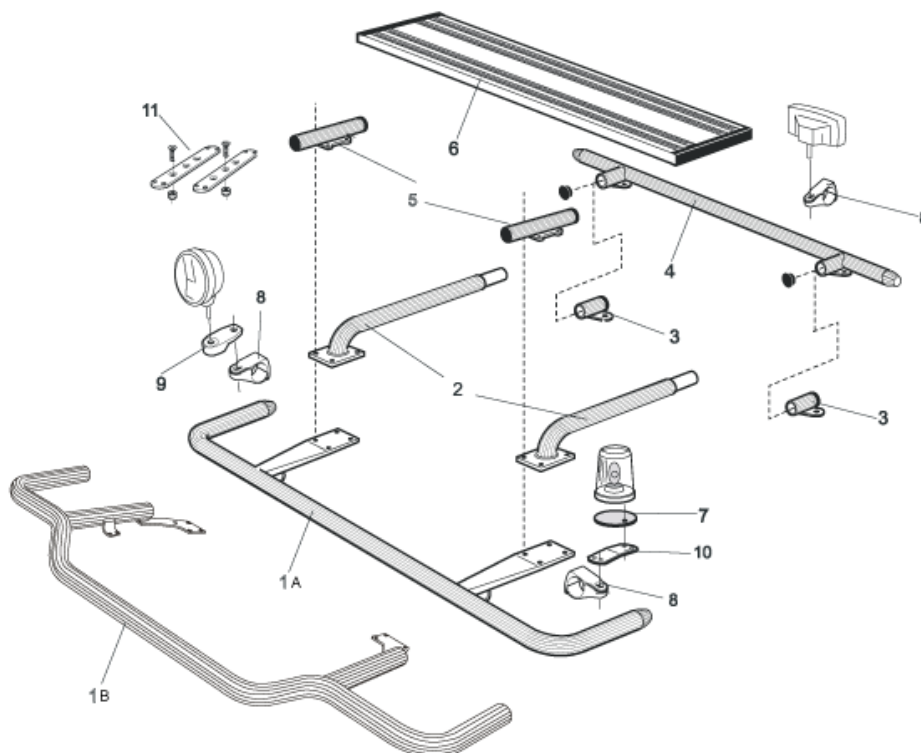


<i>Airflow</i>	L16-2	5 600,-
<i>Smooth profile</i>	L16-2S	5 600,-



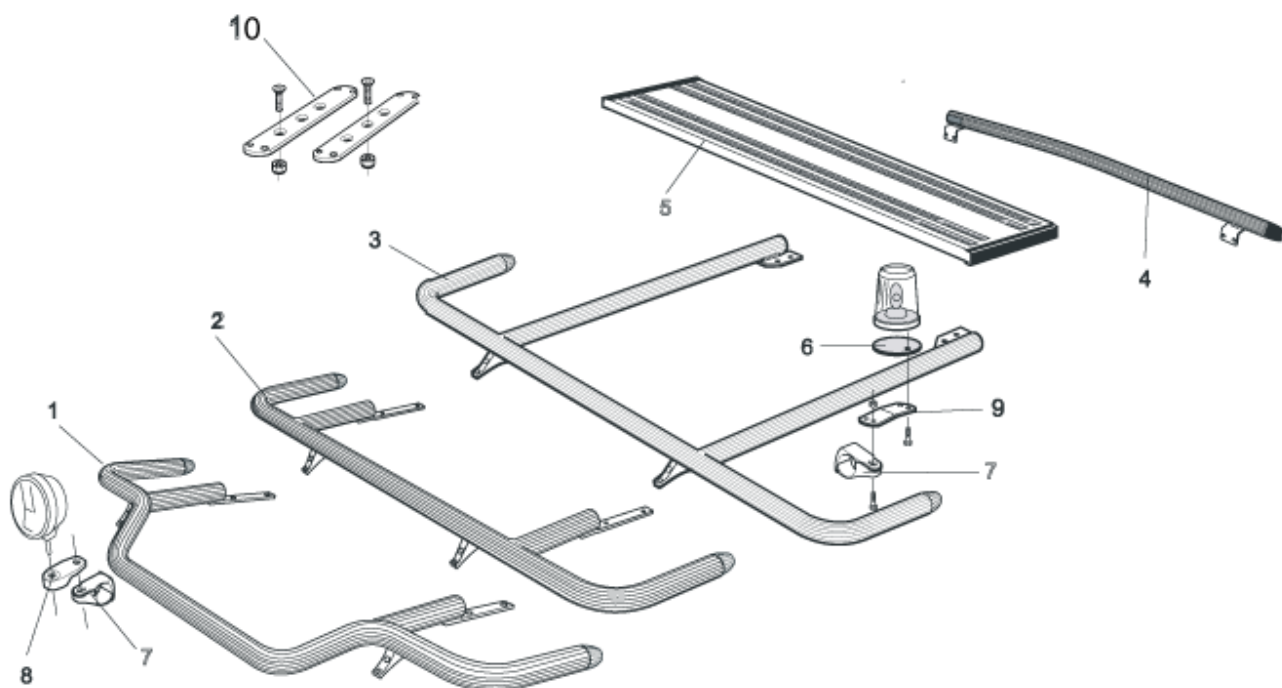
Products for **roof mounting** on **Day cab** (FM-DAY) and **Sleep cab** (FM-SLP)

1	Top-Bar , with mounting kit	<i>Airflow</i>	G14-2	6 100,-
		<i>Smooth profile</i>	G14-2S	6 100,-
2	Spacing tube , with mounting kit For day cab, <i>FM-DAY</i>	<i>Airflow</i>	E14-1	3 600,-
		<i>Smooth profile</i>	E11-1	3 600,-
	For sleep cab, <i>FM-SLP</i>	<i>Airflow</i>	E14-2	3 800,-
		<i>Smooth profile</i>	E11-2	3 800,-
3	Rear fitting for spacing tube , with mounting kit	<i>Airflow</i>	15906	1 500,-
		<i>Smooth profile</i>	15960	1 500,-
4	Rear Top-Bar , with mounting kit	<i>Airflow</i>	G14-1	5 100,-
		<i>Smooth profile</i>	G11-1	5 100,-
5	Spacing tube for cooler cab with mounting kit		E14-4	Expired!
6	Catwalk , with fittings		15935	3 300,-
7	Mounting plate for beacon	Ø 150 mm	15915	240,-
		Ø 165 mm	15917	250,-
		Ø 240 mm	15916	280,-
8	Airflow clamp		15903	350,-
	Clamp (for smooth profile)		15902	290,-
9	Airflow extension		15923	120,-
9	Extension		15912	120,-
10	Angled extension for beacon (8°)		15945	140,-
11	Universal fitting for roof signs / roof light bars		20409	530,-



Products for **roof mounting on FM-HSLP**

1	Top-Bar, with mounting kit			
A	Straight model	Airflow	G14-3	6 100,-
		Smooth profile	G11-3	6 100,-
B	Low model	Airflow	G14-8	7 200,-
		Smooth profile	G14-8S	7 200,-
2	Spacing tube, with mounting kit	Airflow	E14-3	3 600,-
		Smooth profile	E11-3	3 600,-
3	Rear fitting for spacing tube, with mounting kit	Airflow	15906	1 500,-
		Smooth profile	15960	1 500,-
4	Rear Top-Bar, with mounting kit	Airflow	G14-1	5 100,-
		Smooth profile	G11-1	5 100,-
5	Spacing tube for cooler cab with mounting kit		E14-4	Expired!
6	Catwalk, with fittings		15935	3 300,-
7	Mounting plate for beacon	Ø 150 mm	15915	240,-
		Ø 165 mm	15917	250,-
		Ø 240 mm	15916	280,-
8	Airflow clamp		15903	350,-
	Clamp (for smooth profile)		15902	290,-
9	Airflow extension		15923	120,-
	Extension		15912	120,-
10	Angled extension for beacon (8°)		15945	140,-
11	Universal fitting for roof signs / roof light bars		20409	530,-

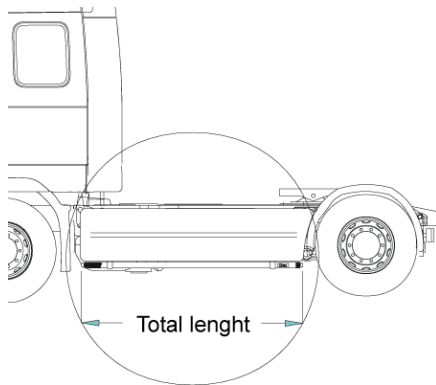


Products for **roof mounting** on **FM-XSHL**

Top-Bar, with mounting kit

1	Low model		<i>Airflow</i>	G14-7	7 200,-
			<i>Smooth profile</i>	G14-7S	7 200,-
2	Straight model for large roof spoiler		<i>Airflow</i>	G14-5	6 400,-
			<i>Smooth profile</i>	G14-5S	6 400,-
3	Straight model		<i>Airflow</i>	G14-4	6 400,-
			<i>Airflow</i>	G11-4	6 400,-
4	Rear Top-Bar , with mounting kit		<i>Airflow</i>	G14-6	5 100,-
			<i>Smooth profile</i>	G14-6S	5 100,-
5	Catwalk , with fittings			15935	3 300,-
6	Mounting plate for beacon	Ø 150 mm		15915	240,-
		Ø 165 mm		15917	250,-
		Ø 240 mm		15916	280,-
7	Airflow clamp			15903	350,-
	Clamp (for smooth profile)			15902	290,-
8	Airflow extension			15923	120,-
	Extension			15912	120,-
9	Angled extension for beacon (8°)			15945	140,-
10	Universal fitting for roof signs / roof light bars			20409	530,-

Sideline



Total length / side 0 – 2500 mm

Airflow	S-1A	4 000,-
Smooth profile	S-1S	4 000,-

Total length / side 2501 – 5000 mm

Airflow	S-2A	4 800,-
Smooth profile	S-2S	4 800,-

AIRFLOW

These products are supplied in our AIRFLOW profile as standard.
This generation of aerodynamic accessories are designed for the highest performance.
On request, we can also supply the products in the traditional "smooth" profile.



FINISH

As standard the accessories are supplied **anodized** in silver color.
Products can also be supplied **sand blasted** for your own lacquering, no additional charge,
or **powder coated** in black or white color or **lacquered** in your own personal color, ask us for a quote.

Brackets comes standard powder coated black, but is possible to get painted in the same color as the front protection

Note! Catwalks come anodized only.

PRICES: All prices are in **SEK** and are subject to VAT and ex works Färila (Sweden)

We reserve the rights to technical or price changes without prior notice

FURTHER INFORMATION about our accessories for mounting of, for example, lights can be found in our folder

"Accessories"

