

**Front protection complete with fittings:** Brackets, bolts and tool key



**Type OFFROAD**

<i>Airflow</i>	B14-2	<b>35 000,-</b>
<i>Smooth profile</i>	B14-2S	<b>35 000,-</b>
<i>Mounting kit</i>	80121	

**Light-Bar with mounting kit**



*Lights and clamps are not included!*

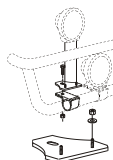
<i>Airflow</i>	H14-3	<b>6 400,-</b>
<i>Smooth profile</i>	H14-3S	<b>6 400,-</b>

**X-Light complete with fittings:** Bolts, pre-wired and 4 spotlight clamps

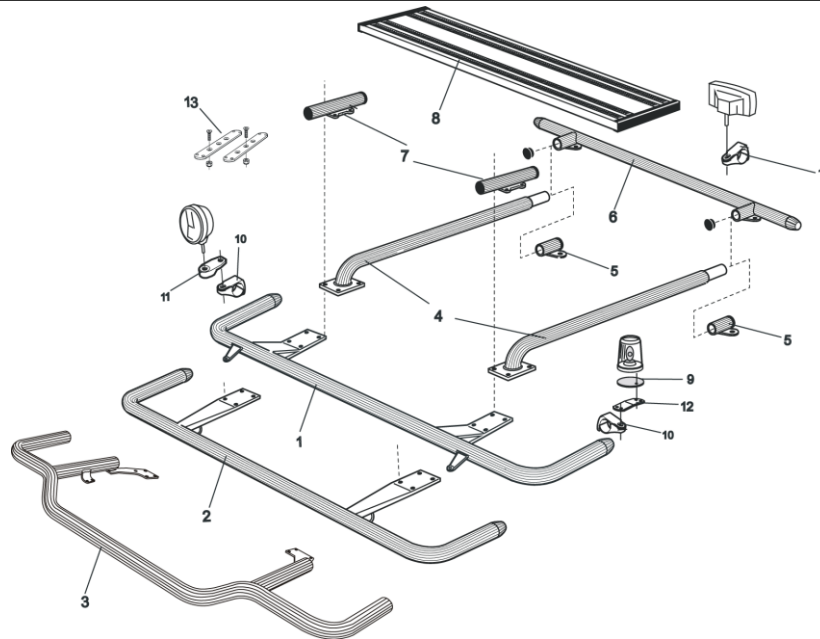


*Lights not included!*

<i>Airflow</i>	K14-4	<b>8 800,-</b>
----------------	-------	----------------



<b>Mounting plate for Hella Luminator</b>	15907	<b>210,-</b>
---	-------	--------------



**Front Top-Bar, with mounting kit**

1	for L1EH1 and L2H1	Airflow	G14-2	6 100,-
		Smooth profile	G11-2	6 100,-
2	for L2H2 Globetrotter	Airflow	G14-3	6 100,-
		Smooth profile	G11-3	6 100,-
3	for L2H2 Globetrotter low model	Airflow	G14-8	7 200,-
		Smooth profile	G14-8S	7 200,-
4	<b>Spacing tube, with mounting kit</b> for L1EH1	Airflow	E14-1	3 600,-
		Smooth profile	E11-1	3 600,-
	for L2H1	Airflow	E14-2	3 800,-
		Smooth profile	E11-2	3 800,-
	for L2H2	Airflow	E14-3	3 600,-
		Smooth profile	E11-3	3 600,-
5	<b>Rear fitting for spacing tube, with mounting kit</b> for L1EH1, L2H1 and L2H2	Airflow	15906	1 500,-
		Smooth profile	15960	1 500,-
6	<b>Rear Top-Bar, with mounting kit</b> for L1Eh1, L2H1 and L2H2	Airflow	G14-1	5 100,-
		Smooth profile	G11-1	5 100,-
7	<b>Spacing tube for cooler cab, with mounting kit</b>		E14-4	Expired!
8	<b>Catwalk with fittings</b>		15935	3 300,-
9	<b>Mounting plate for beacon</b>	Ø 150 mm	15915	240,-
		Ø 165 mm	15917	250,-
		Ø 240 mm	15916	280,-
10	<b>Airflow clamp</b> Clamp		15903	350,-
			15902	290,-
11	<b>Airflow extension</b> Extension		15923	120,-
			15912	120,-
12	<b>Angled extension for beacon (8°)</b>		15945	140,-
13	<b>Universal fitting for roof signs / roof light bars</b>		20409	530,-

#### AIRFLOW

These products are supplied in our AIRFLOW profile as standard.  
The new generation aerodynamic accessories are designed for the highest performance.  
On request, we can also supply the products in the traditional "smooth" profile.



#### FINISH

As standard the accessories are supplied **anodized** in silver color.  
Products can also be supplied **sand blasted** for your own lacquering, no additional charge,  
or **powder coated** in black or white color or **lacquered** in your own personal color, ask us for a quote.

**Brackets** comes standard powder coated black, but is possible to get painted in the same color as the front protection

**Note!** Catwalks come anodized only.

**PRICES:** All prices are in **SEK** and are subject to VAT and ex works Färila (Sweden)

*We reserve the rights to technical or price changes without prior notice*

**FURTHER INFORMATION** about our accessories for mounting of, for example, lights can be found in our folder

**"Accessories"**

