

**Front protection complete with fittings:** Brackets, bolts and tool key



**Type HIGHWAY**

|                       |        |                 |
|-----------------------|--------|-----------------|
| <i>Airflow</i>        | A16-3  | <b>44 400,-</b> |
| <i>Smooth profile</i> | A16-3S | <b>44 400,-</b> |
| <i>Mounting kit</i>   | 80162  |                 |



**Type OFFROAD**

|                       |        |                 |
|-----------------------|--------|-----------------|
| <i>Airflow</i>        | B16-3  | <b>37 600,-</b> |
| <i>Smooth profile</i> | B16-3S | <b>37 600,-</b> |
| <i>Mounting kit</i>   | 80124  |                 |

**Light-Bar with mounting kit**



|                       |        |                |
|-----------------------|--------|----------------|
| <i>Airflow</i>        | H16-3  | <b>6 900,-</b> |
| <i>Smooth profile</i> | H16-3S | <b>6 900,-</b> |

*Lights and clamps are not included!*

**X-Light complete with fittings:** Bolts, pre- wired and 4 spotlight clamps



*Lights not included!*

*(Not for trucks with adaptive cruise control and/or FLS)*

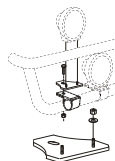
|                       |        |                |
|-----------------------|--------|----------------|
| <i>Airflow</i>        | K16-2  | <b>9 500,-</b> |
| <i>Smooth profile</i> | K16-2S | <b>9 500,-</b> |

**X-Light high complete with fittings:** Bolts, pre- wired and 4 spotlight clamps



*Lights not included!*

|                       |        |                |
|-----------------------|--------|----------------|
| <i>Airflow</i>        | K16-5  | <b>9 500,-</b> |
| <i>Smooth profile</i> | K16-5S | <b>9 500,-</b> |



|   |       |              |
|---|-------|--------------|
| <b>Mounting plate</b> for Hella luminator | 15907 | <b>210,-</b> |
|---|-------|--------------|

**X-Bar with mounting kit**



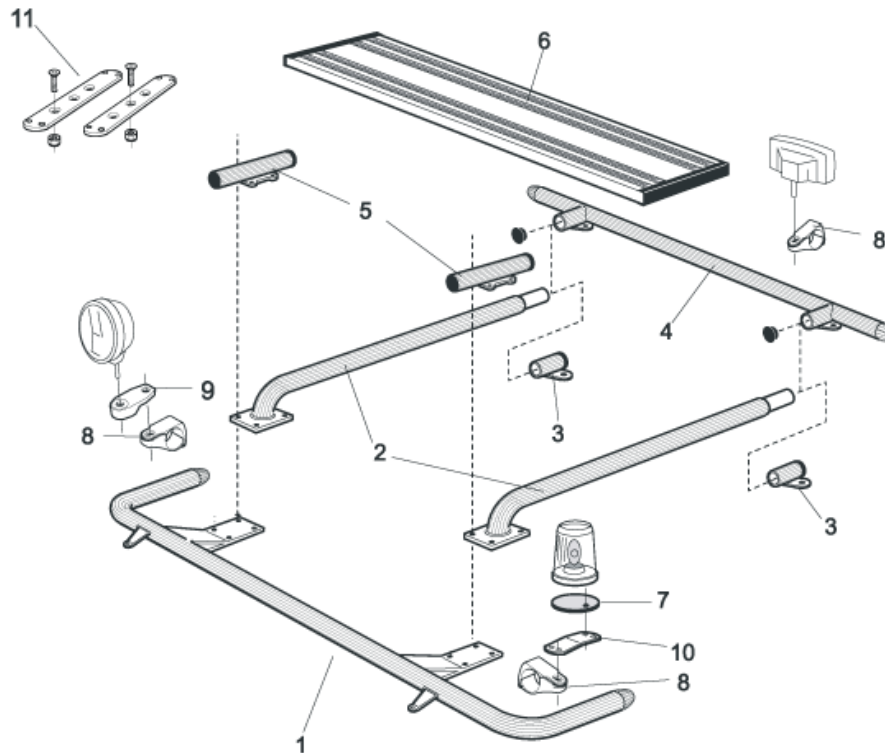
*Lights and clamps are not included!*

|                       |        |                |
|-----------------------|--------|----------------|
| <i>Airflow</i>        | H16-4  | <b>4 900,-</b> |
| <i>Smooth profile</i> | H16-4S | <b>4 900,-</b> |

**U-Bar with mounting kit**

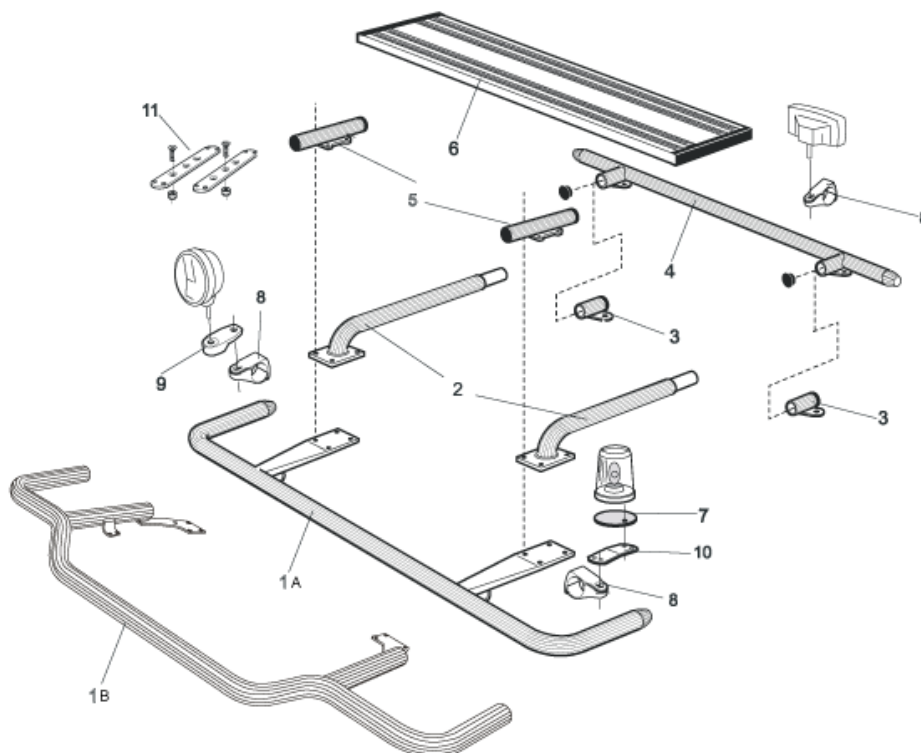


|                       |        |                |
|-----------------------|--------|----------------|
| <i>Airflow</i>        | L16-2  | <b>5 800,-</b> |
| <i>Smooth profile</i> | L16-2S | <b>5 800,-</b> |



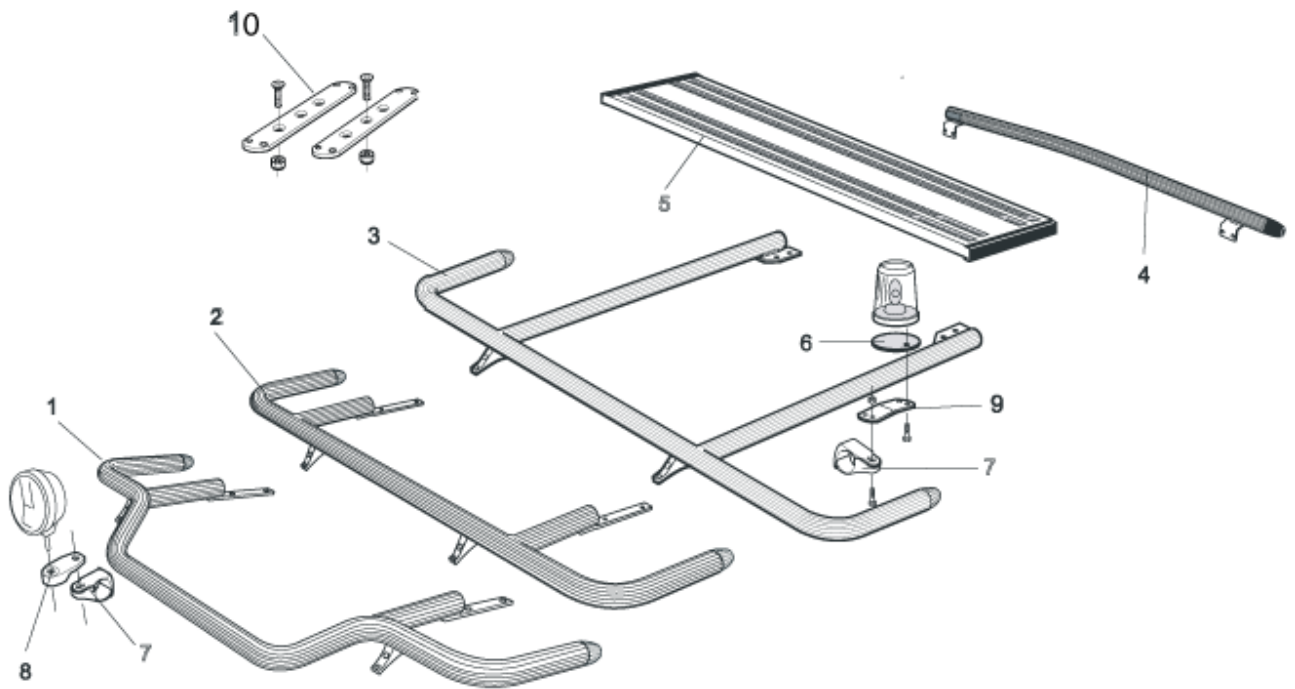
Products for **roof mounting** on **Day cab** (FM-DAY) and **Sleep cab** (FM-SLP)

|    |   |                       |                              |                 |
|----|---|-----------------------|------------------------------|-----------------|
| 1  | <b>Top-Bar</b> , with mounting kit  | <i>Airflow</i>        | G14-2                        | <b>6 300,-</b>  |
|    |   |                       | <i>Smooth profile</i> G14-2S | <b>6 300,-</b>  |
| 2  | <b>Spacing tube</b> , with mounting kit<br>For day cab, <i>FM-DAY</i><br><br>For sleep cab, <i>FM-SLP</i> | <i>Airflow</i>        | E14-1                        | <b>3 800,-</b>  |
|    |   |                       | <i>Smooth profile</i> E11-1  | <b>3 800,-</b>  |
|    |   | <i>Airflow</i>        | E14-2                        | <b>4 000,-</b>  |
|    |   |                       | <i>Smooth profile</i> E11-2  | <b>4 000,-</b>  |
| 3  | <b>Rear fitting for spacing tube</b> , with mounting kit  | <i>Airflow</i>        | 15906                        | <b>1 500,-</b>  |
|    |   | <i>Smooth profile</i> | 15960                        | <b>1 500,-</b>  |
| 4  | <b>Rear Top-Bar</b> , with mounting kit   | <i>Airflow</i>        | G14-1                        | <b>5 300,-</b>  |
|    |   | <i>Smooth profile</i> | G11-1                        | <b>5 300,-</b>  |
| 5  | <b>Spacing tube for cooler cab</b> with mounting kit  |                       | E14-4                        | <b>Expired!</b> |
| 6  | <b>Catwalk</b> , with fittings  |                       | 15935                        | <b>4 300,-</b>  |
| 7  | <b>Mounting plate</b> for beacon  | Ø 150 mm              | 15915                        | <b>240,-</b>    |
|    |   | Ø 165 mm              | 15917                        | <b>250,-</b>    |
|    |   | Ø 240 mm              | 15916                        | <b>280,-</b>    |
| 8  | <b>Airflow clamp</b>  |                       | 15903                        | <b>350,-</b>    |
|    | <b>Clamp</b> (for smooth profile)   |                       | 15902                        | <b>290,-</b>    |
| 9  | <b>Airflow extension</b>  |                       | 15923                        | <b>120,-</b>    |
| 9  | <b>Extension</b>  |                       | 15912                        | <b>120,-</b>    |
| 10 | <b>Angled extension</b> for beacon (8°)   |                       | 15945                        | <b>140,-</b>    |
| 11 | <b>Universal fitting</b> for roof signs / roof light bars   |                       | 20409                        | <b>530,-</b>    |



Products for **roof mounting on FM-HSLP**

|    |   |                |        |          |
|----|---|----------------|--------|----------|
| 1  | <b>Top-Bar, with mounting kit</b>                         |                |        |          |
| A  | Straight model  | Airflow        | G14-3  | 6 300,-  |
|    |   | Smooth profile | G11-3  | 6 300,-  |
| B  | Low model   | Airflow        | G14-8  | 7 400,-  |
|    |   | Smooth profile | G14-8S | 7 400,-  |
| 2  | <b>Spacing tube, with mounting kit</b>                    | Airflow        | E14-3  | 3 800,-  |
|    |   | Smooth profile | E11-3  | 3 800,-  |
| 3  | <b>Rear fitting for spacing tube, with mounting kit</b>   | Airflow        | 15906  | 1 500,-  |
|    |   | Smooth profile | 15960  | 1 500,-  |
| 4  | <b>Rear Top-Bar, with mounting kit</b>                    | Airflow        | G14-1  | 5 300,-  |
|    |   | Smooth profile | G11-1  | 5 300,-  |
| 5  | <b>Spacing tube for cooler cab with mounting kit</b>      |                | E14-4  | Expired! |
| 6  | <b>Catwalk, with fittings</b>                             |                | 15935  | 4 300,-  |
| 7  | <b>Mounting plate for beacon</b>                          | Ø 150 mm       | 15915  | 240,-    |
|    |   | Ø 165 mm       | 15917  | 250,-    |
|    |   | Ø 240 mm       | 15916  | 280,-    |
| 8  | <b>Airflow clamp</b>                                      |                | 15903  | 350,-    |
|    | <b>Clamp (for smooth profile)</b>                         |                | 15902  | 290,-    |
| 9  | <b>Airflow extension</b>                                  |                | 15923  | 120,-    |
|    | <b>Extension</b>  |                | 15912  | 120,-    |
| 10 | <b>Angled extension for beacon (8°)</b>                   |                | 15945  | 140,-    |
| 11 | <b>Universal fitting for roof signs / roof light bars</b> |                | 20409  | 530,-    |



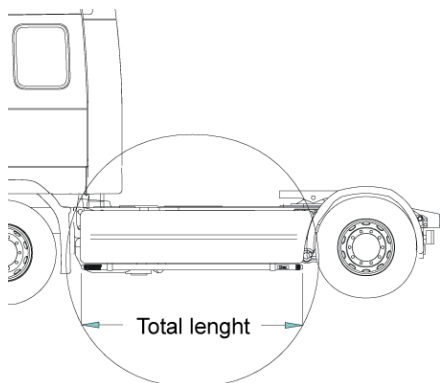
Products for **roof mounting** on **FM-XSHL**

**Top-Bar, with mounting kit**

|    |   |          |                       |        |                |
|----|---|----------|-----------------------|--------|----------------|
| 1  | Low model   |          | <i>Airflow</i>        | G14-7  | <b>7 400,-</b> |
|    |   |          | <i>Smooth profile</i> | G14-7S | <b>7 400,-</b> |
| 2  | Straight model for large roof spoiler                     |          | <i>Airflow</i>        | G14-5  | <b>6 600,-</b> |
|    |   |          | <i>Smooth profile</i> | G14-5S | <b>6 600,-</b> |
| 3  | Straight model  |          | <i>Airflow</i>        | G14-4  | <b>6 600,-</b> |
|    |   |          | <i>Airflow</i>        | G11-4  | <b>6 600,-</b> |
| 4  | <b>Rear Top-Bar, with mounting kit</b>                    |          | <i>Airflow</i>        | G14-6  | <b>5 300,-</b> |
|    |   |          | <i>Smooth profile</i> | G14-6S | <b>5 300,-</b> |
| 5  | <b>Catwalk, with fittings</b>                             |          |                       | 15935  | <b>4 300,-</b> |
| 6  | <b>Mounting plate</b> for beacon                          | Ø 150 mm |                       | 15915  | <b>240,-</b>   |
|    |   | Ø 165 mm |                       | 15917  | <b>250,-</b>   |
|    |   | Ø 240 mm |                       | 15916  | <b>280,-</b>   |
| 7  | <b>Airflow clamp</b>                                      |          |                       | 15903  | <b>350,-</b>   |
|    | <b>Clamp</b> (for smooth profile)                         |          |                       | 15902  | <b>290,-</b>   |
| 8  | <b>Airflow extension</b>                                  |          |                       | 15923  | <b>120,-</b>   |
|    | <b>Extension</b>  |          |                       | 15912  | <b>120,-</b>   |
| 9  | <b>Angled extension</b> for beacon (8°)                   |          |                       | 15945  | <b>140,-</b>   |
| 10 | <b>Universal fitting</b> for roof signs / roof light bars |          |                       | 20409  | <b>530,-</b>   |



## Sidelineer



### Total length / side 0 – 2500 mm

|                |      |         |
|----------------|------|---------|
| Airflow        | S-1A | 4 000,- |
| Smooth profile | S-1S | 4 000,- |

### Total length / side 2501 – 5000 mm

|                |      |         |
|----------------|------|---------|
| Airflow        | S-2A | 4 800,- |
| Smooth profile | S-2S | 4 800,- |

## AIRFLOW

These products are supplied in our AIRFLOW profile as standard.  
This generation of aerodynamic accessories are designed for the highest performance.  
On request, we can also supply the products in the traditional "smooth" profile.



## FINISH

As standard the accessories are supplied **anodized** in silver color.  
Products can also be supplied **sand blasted** for your own lacquering, no additional charge,  
or **powder coated** in black or white color or **lacquered** in your own personal color, ask us for a quote.

**Brackets** comes standard powder coated black, but is possible to get painted in the same color as the front protection

**Note!** Catwalks come anodized only.

**PRICES:** All prices are in **SEK** and are subject to VAT and ex works Färila (Sweden)

*We reserve the rights to technical or price changes without prior notice*

**FURTHER INFORMATION** about our accessories for mounting of, for example, lights can be found in our folder

**"Accessories"**

